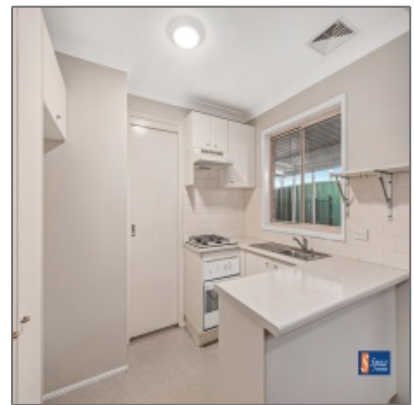




Great townhouse next to a Park

- 6/6 Parkholme Circuit, Englorie Park, NSW



Basic Details

Property Type:	Townhouse
Listing Type:	Sold
Price:	\$480,000
Bedrooms:	3
Bathrooms:	2.5
Land Size:	253 m²

Features

✓	Parking:	1
---	----------	----------

Agent Info



Space Rentals
<https://www.yourspace.com.au/>
02 4648 2288
02 4648 0011
info@yourspace.com.au

